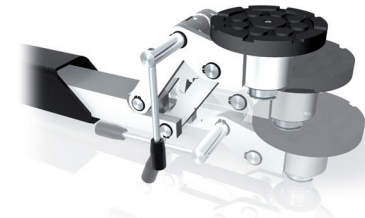


- electronic control with end switches and permanent monitoring of safety functions
- acoustic and optic error display
- permanent monitoring of support nut and automatic switch off in case of maximum permitted wear
- automatic switch off in case of lowering on to an obstacle
- acoustic signal instead of feet protectors
- plastic mounted swivel arms
- automatic and manual support arm locking

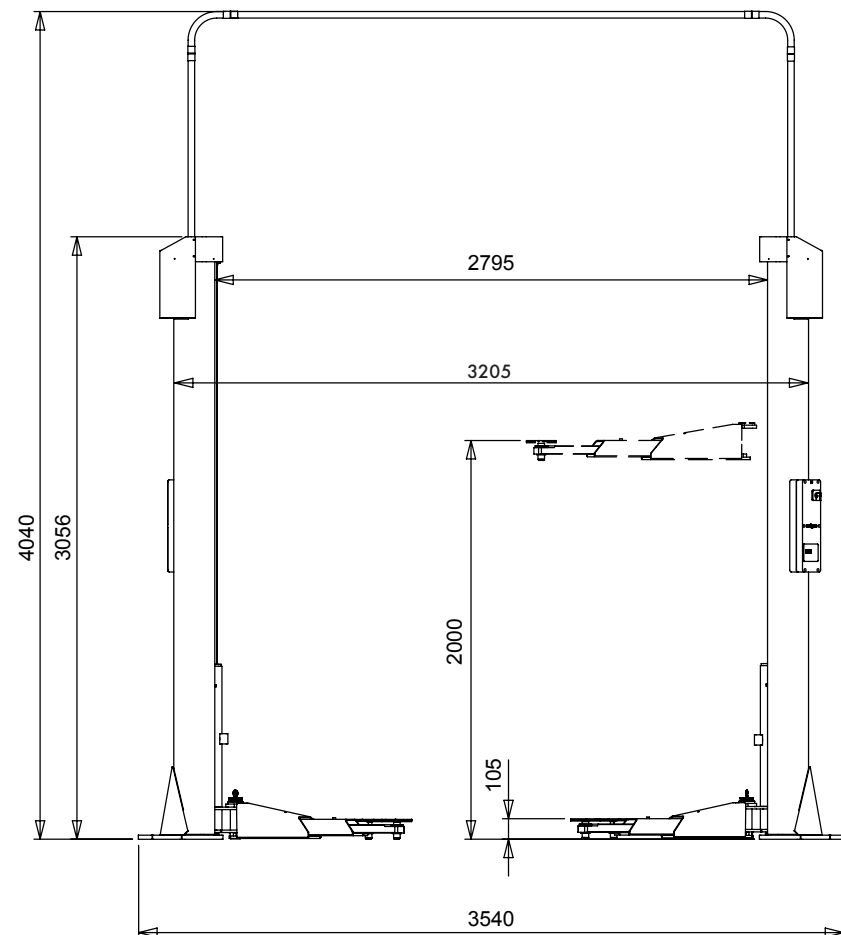


## ACCESSORIES

Flip-flap support  
102219



Energy set  
102226



## TECHNICAL DATA

capacity	3500 kg
column height	3056 mm
total width column-column outside	3540 mm
total width column-column inside	2795 mm
clearance between support arms	2485 mm
lifting height	2000 mm
lifting time	45 sec.
swivel arm short three-piece	620-1240 mm
swivel arm long two-piece	925-1450 mm
adjustable area stacking adapter	105-160 mm
motor output	2 x 2,4 kW
power connector	400 V, 16 A
total weight	530 kg

Eco Lift 2.35  
108672

Flip-flap support for Eco Lift 2.35  
108138

Energy set 230V / Compressed air  
102226

2nd operating control for slave column  
102227

Stacking adapter extension 80 mm  
ø 45 x 80 mm  
102284

Stacking adapter extension 130 mm  
ø 45 x 130 mm  
102287

**Herrmann AG**

Bahnhofstrasse 32  
D-93483 Pöding

**Sales**

Phone: +49 (0)9461/91388 50  
Fax: +49 (0)9461/91388 33  
E-Mail: [sales@herrmann-lifts.com](mailto:sales@herrmann-lifts.com)

**Service**

Phone: +49 (0)9461/91388 31  
Fax: +49 (0)9461/91388 33  
E-Mail: [service@herrmann-lifts.com](mailto:service@herrmann-lifts.com)

[www.herrmann-lifts.com](http://www.herrmann-lifts.com)